



Hosiery  
*Freedom to choose*



# Versatile fabrics

for all stages of Lymphoedema  
and Chronic Oedema



## Stage 1

An early accumulation of fluid relatively high in protein content which subsides with limb elevation.

Veni

pg.12

Stride

pg.14

Star Cotton

pg.16

Doktus

pg.18

Pertex Light

pg.20

Pertex

pg.22

Goldpunkt

pg.24

## Stage 2

Limb elevation alone rarely reduces tissue swelling and pitting is manifest.

## Late Stage 2

Tissue fibrosis is evident with or without pitting

## Stage 3

Skin folds, fibrotic skin changes, fat deposits with warty overgrowths evident. Tissues are firm and do not pit.



## Choose your style

Tights, Thigh Stockings, Below Knee socks, One Legged Tights, or stockings with Waistband attachments.



BELOW KNEE



THIGH HIGH



THIGH HIGH + WAISTBAND



TIGHTS



CLOSED TOE



OPEN TOE

## Attractive versatile colours



MOCHA



SLATE



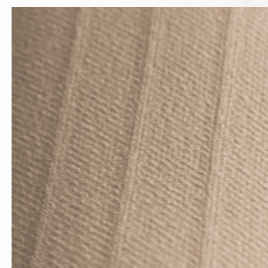
NAVY

## Patterns

Our most versatile fabric Veni also comes in a variety of patterns. Mix and match with 9 colours to make different styles. Narrow Rib and Slate combine to make a great business style sock for men.



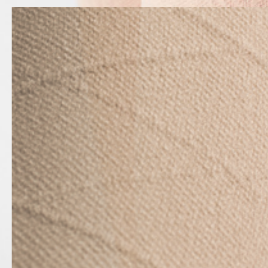
Narrow Rib



Pin Stripe



Honeycomb



Diamond



Zig-zag





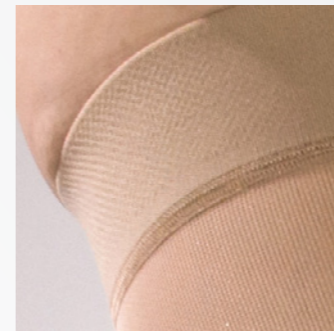
## Stockings that stay put

### Grip Tops

Swelling associated with lymphoedema can fluctuate throughout the day. These attractive silicone grip tops keep them in place without irritation.



Sewn Finish



Plain



Fine Lace



Strong Lace



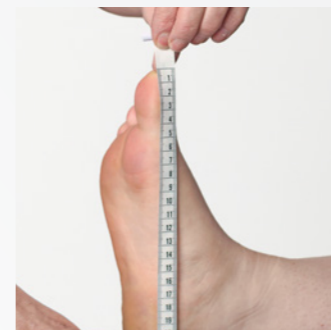
Get the perfect fit

## The widest range of sizing

A wide range of sizes are available with only a few simple measurements required.



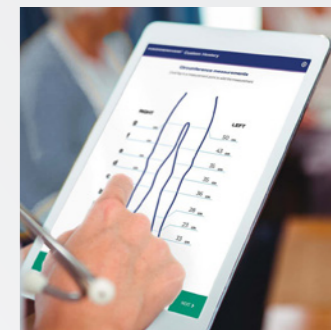
3 Leg Lengths



3 Foot Lengths



Extra Wide option  
for every size



Custom Made  
Options

# veni

RAL CCL1 2 3

## A versatile circular knit

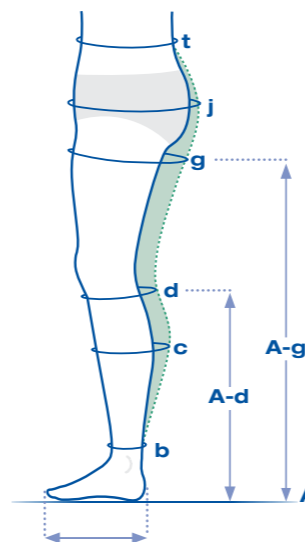
Soft, stretchy and conforming fabric that is easy to don and doff, with a wide choice of colours and patterns.



Model wearing  
Veni Class 2  
Size 6 Extra Wide  
Regular Leg  
Regular Foot  
Burgundy

Circumferences for Extra Wide Sizes shown in green

Circumferences cm	1	2	3	4	5	6	7	8
<b>t WAIST</b>	65-75	70-80	75-85	80-90	85-95	90-105	95-110	100-120
<b>j BUTTOCKS</b>	85-105	90-110	95-115	100-120	105-125	110-130	115-135	120-140
<b>g THIGH TOP</b>	46-55 43-48	48-59 45-51	52-63 49-55	56-66 53-59	60-69 57-63	64-72 61-66	67-75 64-69	70-78 67-72
<b>c WIDEST CALF</b>	31-35 29-33	33-37 31-35	35-39 33-37	37-42 35-39	39-45 37-42	41-47 39-45	43-52 41-48	45-56 43-51
<b>b ANKLE</b>	18-20	20-22	22-24	24-26	26-28	28-30	30-32	32-34



### Length

Straight Distance cm

	SHORT LEG	REGULAR LEG	LONG LEG
<b>A-g FLOOR TO THIGH TOP</b>	57-67	68-80	81-90
<b>A-d FLOOR TO BELOW KNEE</b>	33-37	38-43	44-48

### Foot

Straight Distance cm

	SHORT FOOT	REGULAR FOOT	LONG FOOT
<b>HEEL TO END OF LONGEST TOE</b>	21-23cm	23-26cm	26-29cm

# STRIDE

RAL CCL2

## Lymph active socks

Stylish and versatile design with a plush and comfortable sole, which is easy to don and doff.



BELOW KNEE ONLY



Circumferences cm

XXS

XS

S

M

L

XL

XXL

**c** WIDEST CALF

29-33

31-35

33-37

35-39

37-42

39-45

41-48

**b** ANKLE

18-20

20-22

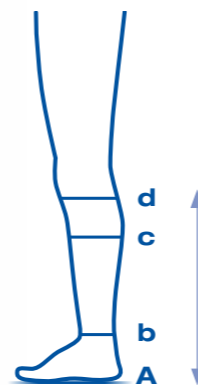
22-24

24-26

26-28

28-30

30-32



### Length

SHORT LEG

REGULAR LEG

**A-d** BELOW KNEE

33-37

38-43

### Foot

SHORT

REGULAR

LONG

EXTRA LONG

**UK** SHOE SIZE

2-5

6-8

9-11

12-14



# STAR Cotton

RAL **CCL1 2**

## Great for sensitive skin

A soft yet firm fabric featuring 100% cotton in contact with the skin to minimise irritation.



BEIGE

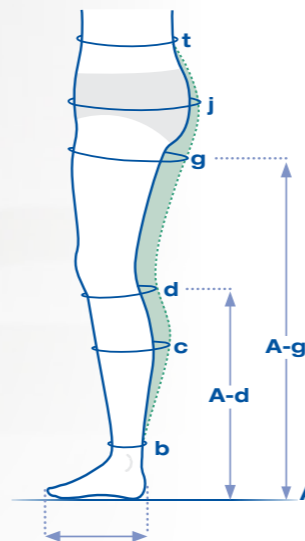


BLACK



Circumferences for Extra Wide Sizes shown in green

Circumferences cm	1	2	3	4	5	6	7	8
<b>t WAIST</b>	65-75	70-80	75-85	80-90	85-95	90-105	95-110	100-120
<b>j BUTTOCKS</b>	85-105	90-110	95-115	100-120	105-125	110-130	115-135	120-140
<b>g THIGH TOP</b>	46-55 43-48	48-59 45-51	52-63 49-55	56-66 53-59	60-69 57-63	64-72 61-66	67-75 64-69	70-78 67-72
<b>c WIDEST CALF</b>	31-35 29-33	33-37 31-35	35-39 33-37	37-42 35-39	39-45 37-42	41-47 39-45	43-52 41-48	45-56 43-51
<b>b ANKLE</b>	18-20	20-22	22-24	24-26	26-28	28-30	30-32	32-34



### Length

Straight Distance cm

	SHORT LEG	REGULAR LEG	LONG LEG
<b>A-g FLOOR TO THIGH TOP</b>	60-67	68-75	76-82
<b>A-d FLOOR TO BELOW KNEE</b>	33-37	38-42	43-46

### Foot

Straight Distance cm

	SHORT FOOT	REGULAR FOOT	LONG FOOT
<b>HEEL TO END OF LONGEST TOE</b>	21-23cm	23-26cm	26-29cm

# Doktus

RAL **CCL2** 3

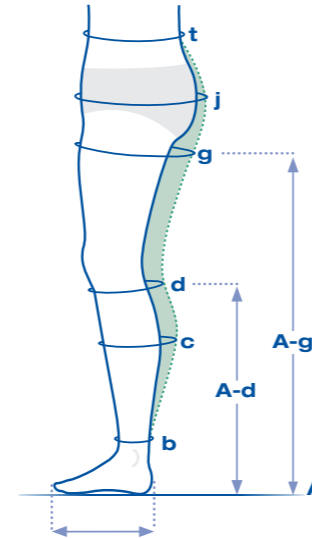
## Robust & firm circular knit

A robust and comfortable fabric available in stronger compression making it suitable for moderate lymphoedema.



Circumferences for Extra Wide Sizes shown in green

Circumferences cm	1	2	3	4	5	6	7	8
<b>t WAIST</b>	65-75	70-80	75-85	80-90	85-95	90-105	95-110	100-120
<b>j BUTTOCKS</b>	85-105	90-110	95-115	100-120	105-125	110-130	115-135	120-140
<b>g THIGH TOP</b>	46-55 43-48	48-59 45-51	52-63 49-55	56-66 53-59	60-69 57-63	64-72 61-66	67-75 64-69	70-78 67-72
<b>c WIDEST CALF</b>	31-35 29-33	33-37 31-35	35-39 33-37	37-42 35-39	39-45 37-42	41-47 39-45	43-52 41-48	45-56 43-51
<b>b ANKLE</b>	18-20	20-22	22-24	24-26	26-28	28-30	30-32	32-34



### Length

Straight Distance cm

	SHORT LEG	REGULAR LEG	LONG LEG
<b>A-g FLOOR TO THIGH TOP</b>	60-67	68-75	76-82
<b>A-d FLOOR TO BELOW KNEE</b>	33-37	38-42	43-46

### Foot

Straight Distance cm

	SHORT FOOT	REGULAR FOOT	LONG FOOT
<b>HEEL TO END OF LONGEST TOE</b>	21-23cm	23-26cm	26-29cm



RAL CCL1

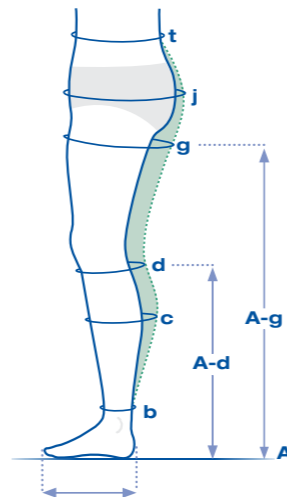
## A uniquely light and stretchy flat knit

Easy to apply due to how much it will stretch with minimal effort. Once on the limb, conforms like you would expect a flat knit to conform, without cutting in.



Circumferences for Extra Wide Sizes shown in green

Circumferences cm	4	5	6	7	8	9	10	11	12	13	14	15
<b>t WAIST</b>	65-75	70-80	70-80	75-85	75-85	80-90	80-90	85-95	85-95	90-105	90-105	95-110
<b>j BUTTOCKS</b>	85-105	90-110	90-110	95-115	95-115	100-120	100-120	105-125	105-125	110-130	110-130	115-135
<b>g THIGH TOP</b>	46-65 44-53	48-68 46-56	50-71 48-59	52-74 50-62	54-77 52-65	56-81 54-69	58-85 56-73	60-89 58-77	62-93 60-81	64-98 62-86	66-103 64-91	68-108 66-96
<b>d BELOW KNEE</b>	29-40 28-32	31-42 30-34	32-44 31-36	34-46 33-38	35-48 34-40	37-50 36-42	38-52 37-44	40-54 39-46	41-56 40-48	43-59 41-51	44-62 43-54	46-65 44-57
<b>c WIDEST CALF</b>	31-39 29-33	33-41 31-35	34-43 33-37	36-45 35-39	37-47 36-41	39-49 38-43	40-51 39-45	42-53 41-47	43-55 42-49	45-58 44-52	46-61 45-55	48-64 47-58
<b>b ANKLE</b>	19-21	20-22	21-23	22-24	23-25	24-26	25-27	26-28	27-29	28-31	29-33	30-36



### Length

Straight Distance cm

	SHORT LEG	REGULAR LEG	LONG LEG
<b>A-g FLOOR TO THIGH TOP</b>	57-67	68-80	81-90
<b>A-d FLOOR TO BELOW KNEE</b>	33-37	38-43	44-48

### Foot

Straight Distance cm

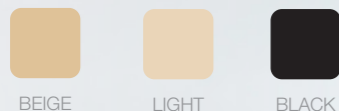
	SHORT FOOT	REGULAR FOOT	LONG FOOT
<b>HEEL TO END OF LONGEST TOE</b>	21-23cm	23-26cm	26-29cm

# Pertex

RAL **CCL2 3**

## Soft but supportive flat knit

Pertex Class 2 & 3 are more rigid than the Light version and are suitable post decongestive treatment or post liposuction for lymphoedema.



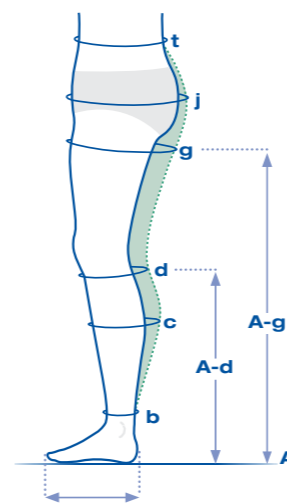
BEIGE  
LIGHT BEIGE  
BLACK

Model wearing  
Pertex Class 2  
Size 13 Extra Wide  
Long Leg  
Regular Foot  
Beige



Circumferences for Extra Wide Sizes shown in green

Circumferences cm	4	5	6	7	8	9	10	11	12	13	14	15
<b>t WAIST</b>	65-75	70-80	70-80	75-85	75-85	80-90	80-90	85-95	85-95	90-105	90-105	95-110
<b>j BUTTOCKS</b>	85-105	90-110	90-110	95-115	95-115	100-120	100-120	105-125	105-125	110-130	110-130	115-135
<b>g THIGH TOP</b>	46-48 44-46	48-50 46-48	50-52 48-50	52-54 50-52	54-56 52-54	56-58 54-56	58-60 56-58	60-62 58-60	62-64 60-62	64-66 62-64	66-68 64-66	68-70 66-68
<b>d BELOW KNEE</b>	29-31 28-30	31-33 30-31	32-34 31-33	34-36 33-34	35-37 34-36	37-39 36-37	38-40 37-39	40-42 39-40	41-43 40-41	43-45 41-43	44-47 43-45	46-48 44-47
<b>c WIDEST CALF</b>	31-33 29-31	33-35 31-33	34-36 33-35	36-38 35-36	37-39 36-38	39-41 38-39	40-42 39-41	42-44 41-42	43-45 42-44	45-47 44-45	46-49 45-47	48-50 47-49
<b>b ANKLE</b>	19-20	20-21	21-22	22-23	23-24	24-25	25-26	26-27	27-28	28-29	29-30	30-31



### Length

Straight Distance cm

**SHORT LEG** **REGULAR LEG** **LONG LEG**

<b>A-g FLOOR TO THIGH TOP</b>	60-67	68-75	76-82
<b>A-d FLOOR TO BELOW KNEE</b>	33-37	38-42	43-46

### Foot

Straight Distance cm

**SHORT FOOT** **REGULAR FOOT** **LONG FOOT**

<b>HEEL TO END OF LONGEST TOE</b>	21-23cm	23-26cm	26-29cm
-----------------------------------	---------	---------	---------

# GOLDPUNKT

RAL **CCL2** 3 4

## Our most robust flat knit

The most robust flat knit, which whilst firm has a silky smooth feel next to the skin. Its smooth nature also helps to aid donning.



BEIGE

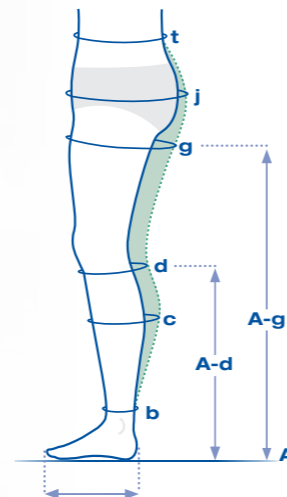


BLACK



Circumferences for Extra Wide Sizes shown in green

Circumferences cm	4	5	6	7	8	9	10	11	12	13	14	15
<b>t</b> WAIST	65-75	70-80	70-80	75-85	75-85	80-90	80-90	85-95	85-95	90-105	90-105	95-110
<b>j</b> BUTTOCKS	85-105	90-110	90-110	95-115	95-115	100-120	100-120	105-125	105-125	110-130	110-130	115-135
<b>g</b> THIGH TOP	46-48 44-46	48-50 46-48	50-52 48-50	52-54 50-52	54-56 52-54	56-58 54-56	58-60 56-58	60-62 58-60	62-64 60-62	64-66 62-64	66-68 64-66	68-70 66-68
<b>d</b> BELOW KNEE	29-31 28-30	31-33 30-31	32-34 31-33	34-36 33-34	35-37 34-36	37-39 36-37	38-40 37-39	40-42 39-40	41-43 40-41	43-45 41-43	44-47 43-45	46-48 44-47
<b>c</b> WIDEST CALF	31-33 29-31	33-35 31-33	34-36 33-35	36-38 35-36	37-39 36-38	39-41 38-39	40-42 39-41	42-44 41-42	43-45 42-44	45-47 44-45	46-49 45-47	48-50 47-49
<b>b</b> ANKLE	19-20	20-21	21-22	22-23	23-24	24-25	25-26	26-27	27-28	28-29	29-30	30-31



### Length

Straight Distance cm

	SHORT LEG	REGULAR LEG	LONG LEG
<b>A-g</b> FLOOR TO THIGH TOP	60-67	68-75	76-82
<b>A-d</b> FLOOR TO BELOW KNEE	33-37	38-42	43-46

### Foot

Straight Distance cm

	SHORT FOOT	REGULAR FOOT	LONG FOOT
<b>HEEL TO END OF LONGEST TOE</b>	21-23cm	23-26cm	26-29cm

# Anklets

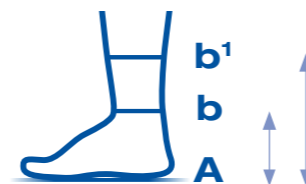
RAL CCL1 2 3 4

In all fabrics and colour



An anklet is useful where there is oedema throughout the foot but the leg is unaffected, as in some primary lymphoedema.



Circumferences cm		1	2	3	4	5	6	7	8
<b>CIRCULAR KNITS</b>	<b>b ANKLE</b>	18-20	20-22	22-24	24-26	26-28	28-30	30-32	32-34
<b>FLAT KNITS</b>	<b>b ANKLE</b>	17-19	19-21	21-23	23-25	25-27	27-29	-	-



## Length

	SHORT	REGULAR
<b>A-b</b> 	10-12	-
<b>A-b¹</b> 	-	15-17

## Foot

Straight Distance cm

	SHORT FOOT	REGULAR FOOT	LONG FOOT
--	------------	--------------	-----------

<b>HEEL TO END OF LONGEST TOE</b>	21-23cm	23-26cm	26-29cm
-----------------------------------	---------	---------	---------

# Microfine TOECAP

An ultra-thin and smooth fabric that trims to fit without fraying



BEIGE



BLACK



Circumferences cm

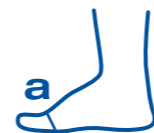
XS

S

M

L

XL



BALL OF FOOT

21 - 23

23 - 25

25 - 27

27 - 29

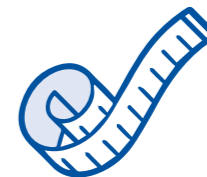
29 - 31



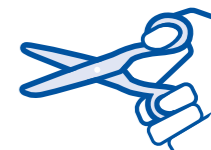
No need to  
bandage toes



20-36mmHg  
Compression



Easy to measure  
and fit



Trim to fit

# Custom Made

If falling outside of sizing charts, fully bespoke garments offer the widest choice possible of style, fabric and options.

**Custom Online** web-app, breaks forms into manageable sections which guide you through the measurement process.

[www.hadhealth.com/custom-online](http://www.hadhealth.com/custom-online)

Or **Download** a hard-copy form from our website, and fill-in by hand.

[www.hadhealth.com/F0001](http://www.hadhealth.com/F0001)

**ANKLET** **BELOW KNEE** **THIGH HIGH** **THIGH HIGH + WAISTBAND** **THIGH HIGH PAIR + COMBINED WAISTBAND** **TIGHTS** **TIGHTS ONE LEGGED**

LENGTH CIRCUMFERENCE RIGHT LEFT CIRCUMFERENCE LENGTH

A-g A-f A-e A-d A-c A-b<sup>1</sup> A-b

g f e d c b b<sup>1</sup> b h a

3 FOOT LENGTHS

RIGHT LEFT

heel to base of little toe heel to base of big toe heel to top of big toe

5 FABRIC

	CIRCULAR KNIT			FLAT KNIT		
	VENI NOT ON FP10	DOKTUS NOT ON FP10	STAR COTTON NOT ON FP10	PERTEX LIGHT 15-21mmHg	PERTEX	GOLDPUNKT
CLASS 1	<input type="checkbox"/>		<input type="checkbox"/>	<input type="checkbox"/>		
CLASS 2	<input type="checkbox"/>	<input type="checkbox"/>	<input type="checkbox"/>		<input type="checkbox"/>	<input type="checkbox"/>
CLASS 3	<input type="checkbox"/>	<input type="checkbox"/>			<input type="checkbox"/>	<input type="checkbox"/>
CLASS 4						<input type="checkbox"/>

6 GRIP TOP

FP10 CHARGE OPTION

3cm PLAIN	<input type="checkbox"/>
5cm STRONG PLAIN	<input type="checkbox"/>
5cm FINE LACE	<input type="checkbox"/>
5cm STRONG LACE	<input type="checkbox"/>
5cm <sup>2</sup> GRIP PIECES	<input type="checkbox"/>
4cm NON-SILICONE	<input type="checkbox"/>

7 COLOUR

8 QUANTITY

	RIGHT	LEFT	TIGHTS
	<input type="checkbox"/>	<input type="checkbox"/>	<input type="checkbox"/>

SPECIAL OPTIONS

[www.hadhealth.com/custom-online](http://www.hadhealth.com/custom-online)





Doktus **veni**

*Pertex*

STRIDE

STAR  
Cotton



Hosiery

Haddenham Healthcare Ltd  
4D Drakes Drive  
Long Crendon, HP18 9BA  
United Kingdom



[www.hadhealth.com](http://www.hadhealth.com)

01844 208842

[sales@hadhealth.com](mailto:sales@hadhealth.com)

